

Technical Information

Stainless Steel — 56C Frame 1-Phase and 3-Phase NEMA AC Footed and Round Body Performance Data and Mounting Dimensions

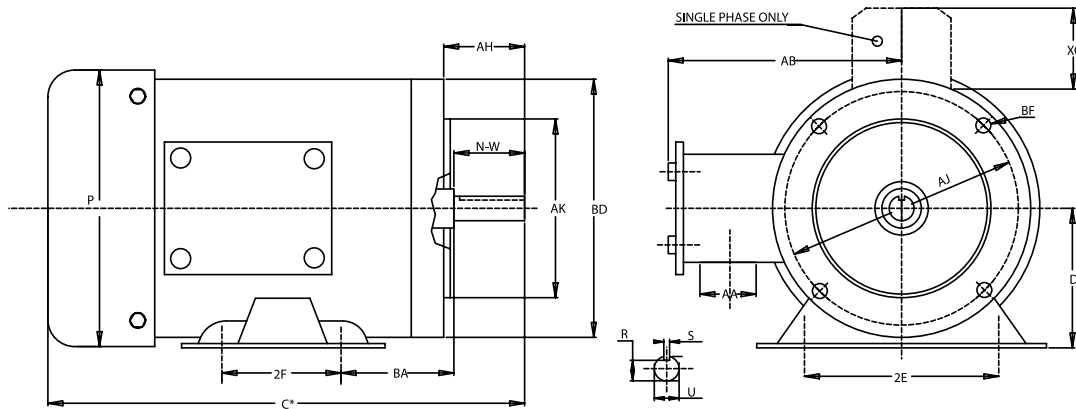
TECHNICAL INFORMATION

1-Phase 56C Frame Stainless Steel

HP	RPM	FRAME	VOLT	PHASE	HZ	AMPS 230V	LRT %	BDT %	LRA %	EFF %	PF %	C DIM	LBS	ENCL
1/3	3450	56C	115/230	1	60	2.4	293	209	543	56	82	10.6	23	TEFC
	1720	56C	115/230	1	60	2.8	280	230	490	68	58	10.6	23	TEFC
1/2	3450	56C	115/230	1	60	3.1	360	180	658	63	83	10.6	24	TEFC
	1720	56C	115/230	1	60	4.1	320	220	512	61	65	11.0	24	TEFC
3/4	3450	56C	115/230	1	60	4.5	310	170	587	63	84	11.0	26.5	TEFC
	1720	56C	115/230	1	60	4.9	280	220	612	72	68	11.7	23.5	TEFC
1	3450	56C	115/230	1	60	6.2	270	184	709	64	84	11.7	31.5	TEFC
	1720	56C	115/230	1	60	6.8	270	230	618	69	69	12.2	33	TEFC
1.5	3450	56C	115/230	1	60	8.8	270	190	647	65	84	12.2	35	TEFC
	1720	56C	115/230	1	60	9.5	250	220	663	73	69	13.1	38.5	TEFC
2	3450	56HC	115/230	1	60	10.8	240	210	759	72	84	14.0	50	TEFC
	1720	56HC	115/230	1	60	9	190	190	733	76	95	14.0	48	TEFC

3-Phase 56C Frame Stainless Steel

HP	RPM	FRAME	VOLT	PHASE	HZ	AMPS 460V	LRT %	BDT %	LRA %	EFF %	PF %	C DIM	LBS	ENCL
1/3	3400	56C	230/460	3	60	0.58	200	221	568	67	88	8.9	23	TENV
	1700	56C	230/460	3	60	0.65	320	380	785	72	66	9.4	22	TENV
1/2	3400	56C	230/460	3	60	0.8	230	250	680	75	85	8.9	25	TENV
	1700	56C	230/460	3	60	0.85	270	360	776	78	70	9.4	23.5	TENV
3/4	3400	56C	230/460	3	60	1.1	210	250	663	80	80	8.9	30	TENV
	1700	56C	230/460	3	60	1.2	270	340	825	79	75	9.4	31	TENV
1	3400	56C	230/460	3	60	1.3	240	230	807	80	85	11.2	38	TEFC
	1700	56C	230/460	3	60	1.5	300	380	906	81	75	12.8	38	TEFC
1.5	3400	56C	230/460	3	60	1.85	200	240	843	82.5	85	12.8	45	TEFC
	1700	56C	230/460	3	60	2.3	300	330	878	82.5	72	12.8	45	TEFC
2	3400	56HC	230/460	3	60	2.45	170	230	829	84	87	12.8	47	TEFC
	1700	56HC	230/460	3	60	2.9	290	300	828	84	75	12.8	51	TEFC
3	3400	56HC	230/460	3	60	3.8	350	360	1020	80	83	12.8	51	TEFC



FRAME	PH	D	2E	2F	BA	N-W	R	S	U	AH	AJ	AK	BF	AA	AB	BD	P	X0
56C	1	3.5	4.88	3	2.75	1-7/8	33/64	3/16	5/8	2 1/16	5-7/8	4 1/2	3/8-16	0.87	5 5/16	6 19/32	7 1/10	1.72
56C	3	3.5	4.88	3	2.75	1-7/8	33/64	3/16	5/8	2 1/16	5-7/8	4 1/2	3/8-16	0.87	5 5/16	6 19/32	7 1/10	-

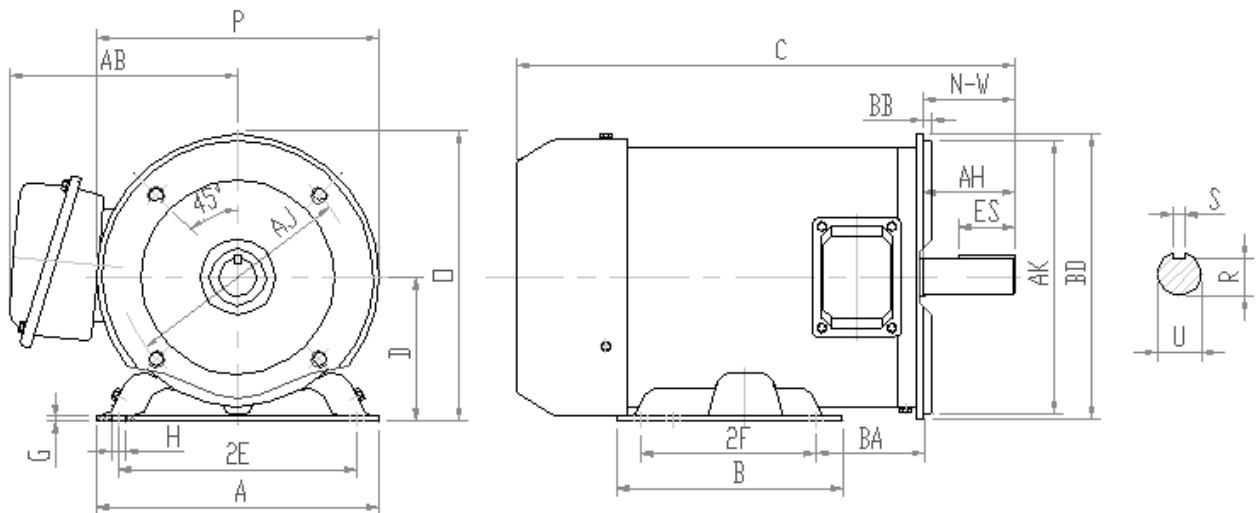
NOTE: C Dimension included in performance data.
Fractional 3-Phase motors in their standard version have neither fan nor fan guard (TENV).

Technical Information

Stainless Steel — 143TC-215TC 3-Phase

NEMA AC Footed and Round Body Performance Data and Mounting Dimensions

HP	RPM	FRAME	PHASE	AMPS 460V	FLT (lb-ft)	LRT %	BDT %	EFF %	PF %	CODE	BEARING	LBS	ENCL
1	3450	143TC	3	1.35	1.52	185	250	82.5	84	J	6205	38	TEFC
	1720	143TC	3	1.52	3.04	225	280	82.5	75	H	6205	38	TEFC
1.5	3430	143TC	3	2.03	2.3	175	250	82.5	84	H	6205	45	TEFC
	1710	145TC	3	2.12	4.59	250	280	84	79	F	6205	45	TEFC
2	3440	145TC	3	2.59	3.05	170	240	84	86	H	6205	47	TEFC
	1710	145TC	3	2.78	6.13	235	270	84	80	F	6205	51	TEFC
3	3510	182TC	3	3.78	4.49	160	230	85.5	87	J	6306	84	TEFC
	1760	182TC	3	4.17	8.9	215	250	87.5	77	K	6306	86	TEFC
5	3500	184TC	3	6.08	7.5	150	215	87.5	88	H	6306	92	TEFC
	1750	184TC	3	6.69	14.92	185	215	87.5	80	H	6306	93	TEFC
7.5	3510	213TC	3	8.92	11.23	140	200	88.5	89	H	6308	137	TEFC
	1760	213TC	3	9.28	22.39	175	215	89.5	84	C	6308	148	TEFC
10	3510	215TC	3	11.62	14.97	135	200	89.5	90	G	6308	153	TEFC
	1760	215TC	3	12.4	29.85	165	200	89.5	84	B	6308	180	TEFC



FRAME	MOUNTING			A	B	C	D	G	H	O	P	AB	SHAFT EXTENSION		
	E	F	BA										N-W	U	V
143TC	2.75	2	2.75	6.4	6.4	12.6	3.5	0.08	0.34	7	7	6.2	2.25	0.875	2
145TC	2.75	2.5	2.75	6.4	6.4	13.6	3.5	0.08	0.34	7	7	6.2	2.25	0.875	2
182TC	3.75	2.25	2.75	9	6.4	16	4.5	0.16	0.41	9.2	8.7	7.2	2.75	1.125	2.5
184TC	3.75	2.75	2.75	9	7.4	17	4.5	0.16	0.41	9.2	8.7	7.2	2.75	1.125	2.5
213TC	4.25	2.75	3.5	10.5	8.5	22	5.25	0.16	0.41	10.4	10.4	8.27	3.38	1.375	3.12
215TC	4.25	3.5	3.5	10.5	8.5	22	5.25	0.16	0.41	10.4	10.4	8.27	3.38	1.375	3.12

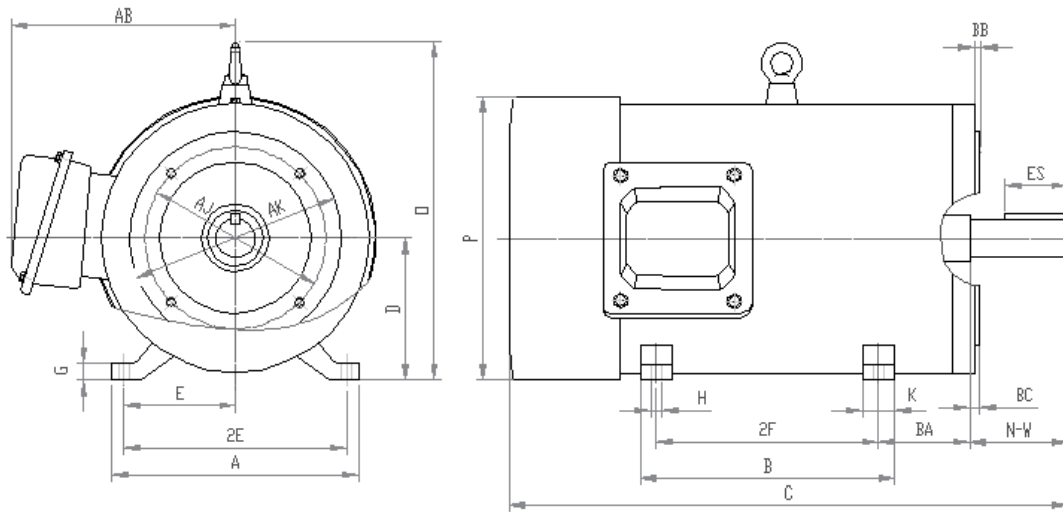
FRAME	AJ	AK	MIN BB	BC	MAX BD	# OF HOLES	SCREW	DEPTH OF HOLE	AH	KEYWAY		
										R	ES	S
143TC - 145TC	5.875	4.5	0.16	+0.12	6.5	4	3/8-16	0.56	2.12	0.771	1.41	0.188
182TC - 184TC	7.25	8.5	0.25	+0.12	9.0	4	1/2-13	0.75	2.62	0.986	1.78	0.250
213TC - 215TC	7.250	8.5	0.25	+0.25	9.0	4	1/2-13	0.75	3.12	1.201	2.41	0.312

Technical Information

Stainless Steel — 254TC-286TC 3-Phase

NEMA AC Footed and Round Body Performance Data and Mounting Dimensions

HP	RPM	FRAME	PHASE	AMPS 460V	FLT (lb-ft)	LRT %	BDT %	EFF %	PF %	CODE	BEARING	LBS	ENCL
15	3540	254TC	3	17.6	22.27	180	240	90.2	89	G	6309	234	TEFC
	1760	254TC	3	18.6	44.77	185	220	91	83	G	6309	256	TEFC
20	3530	256TC	3	23.2	29.76	160	220	90.2	90	F	6309	278	TEFC
	1760	256TC	3	24.8	59.7	180	220	91	84	G	6309	300	TEFC
25	3550	284TSC	3	28.9	37	170	230	91	90	F	6310	370	TEFC
	1770	284TC	3	29.6	74.2	170	220	92.4	86	G	6310	390	TEFC
30	3550	286TSC	3	34.5	44.4	170	220	91	90	F	6310	410	TEFC
	1770	286TC	3	35.5	89.04	170	220	92.4	86	F	6310	417	TEFC



FRAME	MOUNTING			A	B	C	D	G	H	O	P	AB	SHAFT EXTENSION		
	E	F	BA										N-W	U	V
254TC	5	4.125	4.75	11.2	9.43	24	6.25	0.6	0.53	14.2	12.5	9.84	4	1.625	3.75
256TC	5	5	4.75	11.2	11.18	25.4	6.25	0.6	0.53	14.2	12.5	9.84	4	1.625	3.75
284TSC	5.5	4.75	4.75	12.2	11.08	25.6	7	0.78	0.53	16.54	14	11.42	3.25	1.625	3
284TC	5.5	4.75	4.75	12.2	11.08	27	7	0.78	0.53	16.54	14	11.42	4.62	1.875	4.38
286TSC	5.5	5.5	4.75	12.2	12.57	26.6	7	0.78	0.53	16.54	14	11.42	3.25	1.625	3
286TC	5.5	5.5	4.75	12.2	12.57	27.95	7	0.78	0.53	16.54	14	11.42	4.62	1.875	4.38

FRAME	AJ	AK	MIN BB	BC	MAX BD	# F HOLES	SCREW	DEPTH OF HOLE	AH	KEYWAY		
										R	ES	S
254TC - 256TC	7.25	8.5	0.25	+0.25	10.0	4	1/2-13	0.75	3.75	1.416	2.91	0.375
284TSC - 286TSC	9	10.5	0.25	+0.25	11.25	4	1/2-13	0.75	3.0	1.416	1.91	0.375
284TC - 286TC	9	10.5	0.25	+0.25	11.25	4	1/2-13	0.75	4.38	1.591	3.28	0.5